

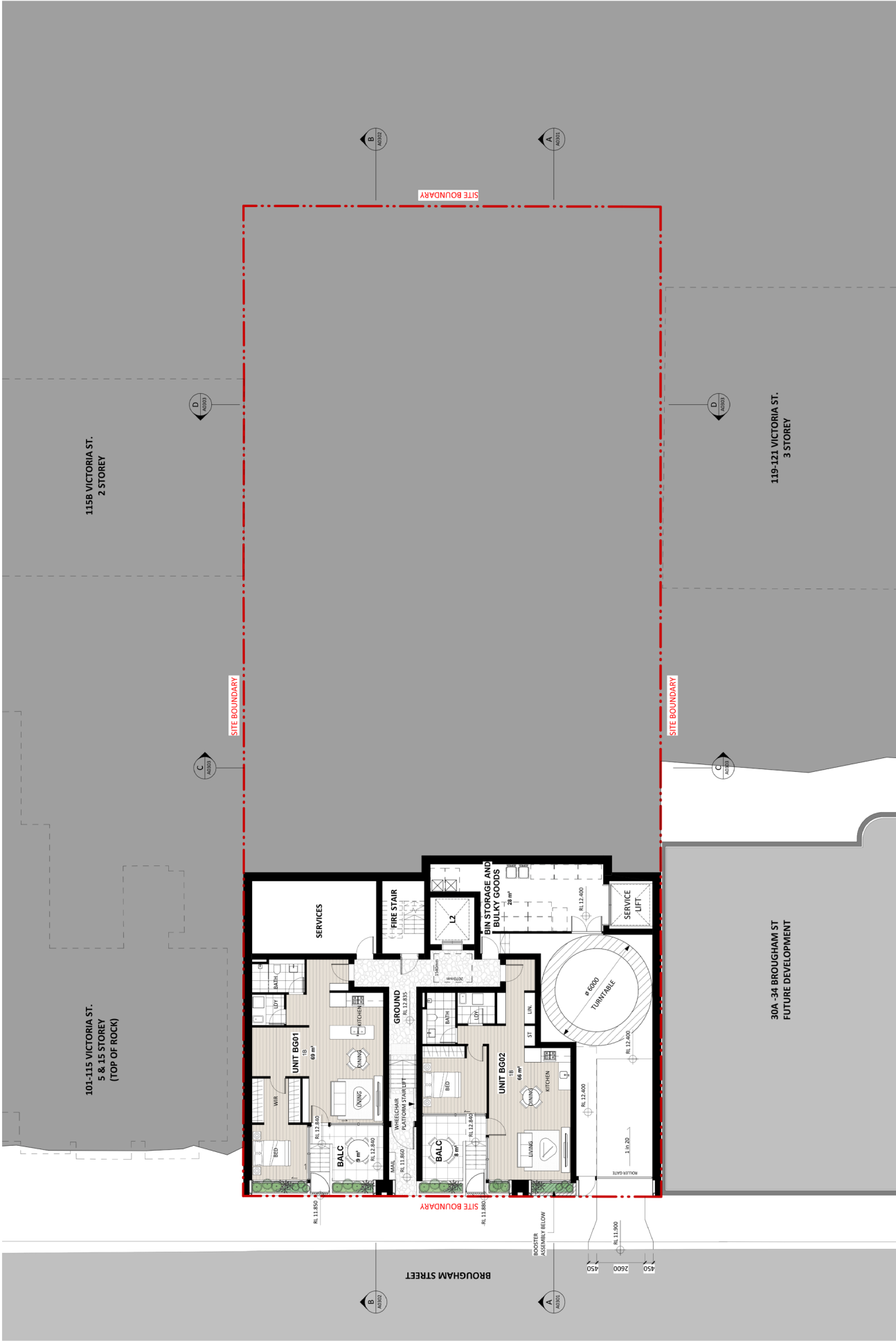
Attachment A1

Selected Drawings

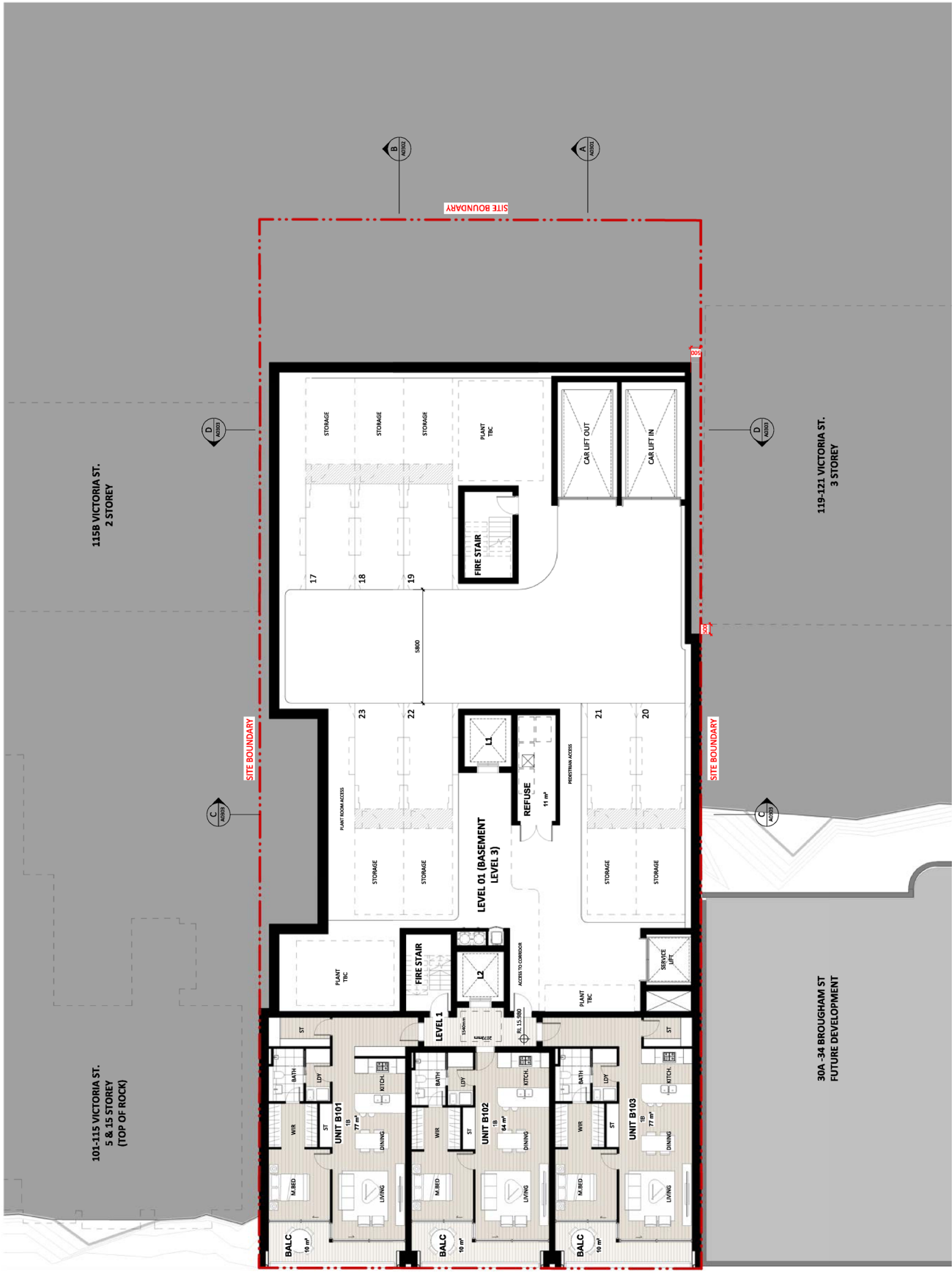


SUBJECT SITE
117 VICTORIA STREET
 SITE AREA 1201 m²
 DP 62550

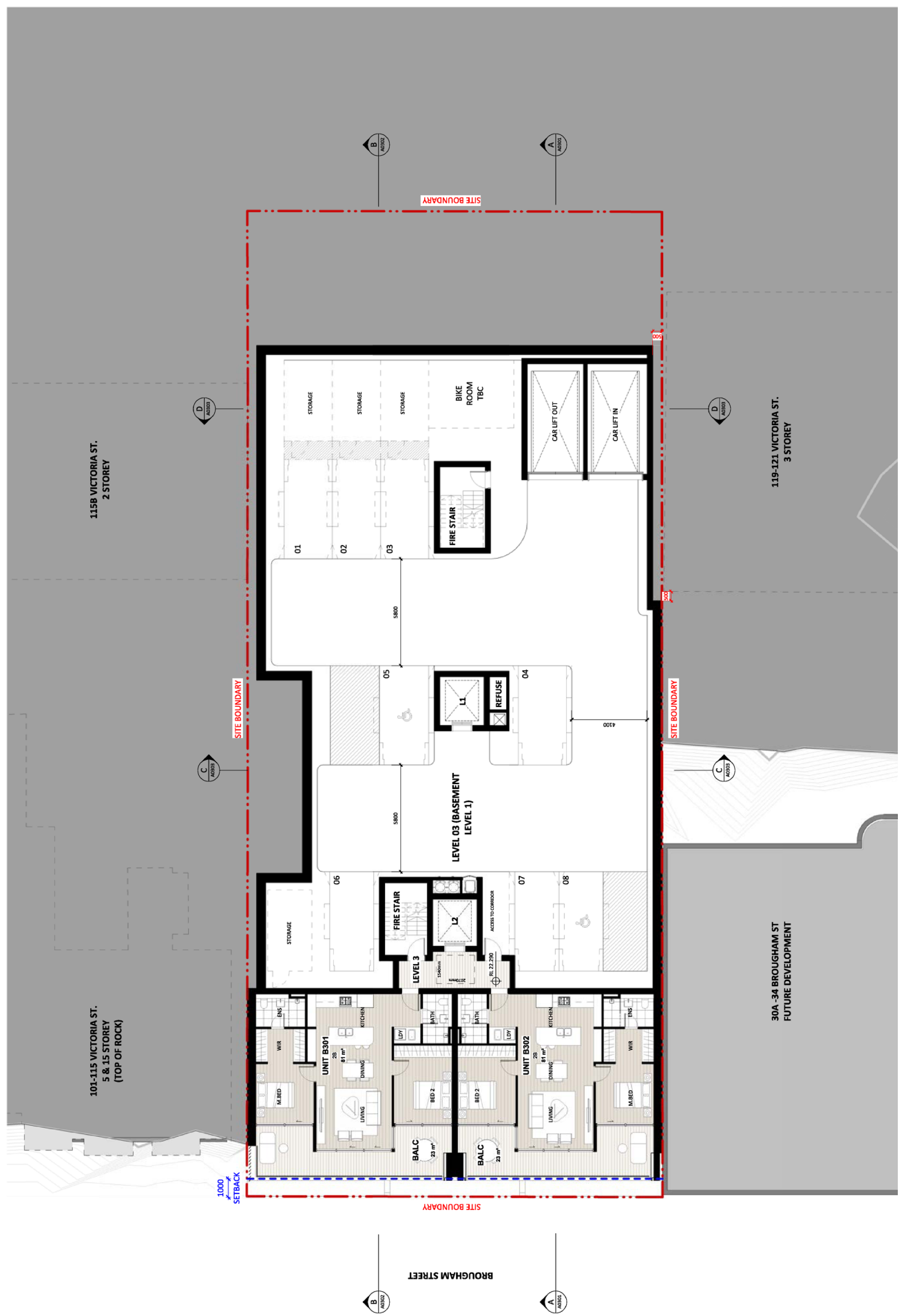
NSW 1: REGION 2: LOCAL GOVERNMENT DISTRICT 3: LOCAL GOVERNMENT NAME 4: LOCAL GOVERNMENT CODE 5: LOCAL GOVERNMENT ADDRESS 6: LOCAL GOVERNMENT PHONE 7: LOCAL GOVERNMENT FAX 8: LOCAL GOVERNMENT WEBSITE 9: LOCAL GOVERNMENT EMAIL		PROJECT 117 VICTORIA ST POTTS POINT, NSW 2011		DRAWING TITLE CONTEXT PLAN			
CLIENT CEREOSE 20 Pirrama Road, LEICHHARDT NSW 2040		ARCHITECT Koichi Takada Architects SITES 4 & 5, LEVEL 4 81 MARK BROUGHAM ST POTTS POINT, NSW 2011 TEL: 02 9598 8530 WWW.KOICHI-TAKADA.COM AN ASSOCIATED ARCHITECT NSW ARCHITECTS 8801 NSW ARCHITECTS 8809 NSW ARCHITECTS 8810 NSW ARCHITECTS 8811 NSW ARCHITECTS 8812 NSW ARCHITECTS 8813 NSW ARCHITECTS 8814 NSW ARCHITECTS 8815 NSW ARCHITECTS 8816 NSW ARCHITECTS 8817 NSW ARCHITECTS 8818 NSW ARCHITECTS 8819 NSW ARCHITECTS 8820 NSW ARCHITECTS 8821 NSW ARCHITECTS 8822 NSW ARCHITECTS 8823 NSW ARCHITECTS 8824 NSW ARCHITECTS 8825 NSW ARCHITECTS 8826 NSW ARCHITECTS 8827 NSW ARCHITECTS 8828 NSW ARCHITECTS 8829 NSW ARCHITECTS 8830 NSW ARCHITECTS 8831 NSW ARCHITECTS 8832 NSW ARCHITECTS 8833 NSW ARCHITECTS 8834 NSW ARCHITECTS 8835 NSW ARCHITECTS 8836 NSW ARCHITECTS 8837 NSW ARCHITECTS 8838 NSW ARCHITECTS 8839 NSW ARCHITECTS 8840 NSW ARCHITECTS 8841 NSW ARCHITECTS 8842 NSW ARCHITECTS 8843 NSW ARCHITECTS 8844 NSW ARCHITECTS 8845 NSW ARCHITECTS 8846 NSW ARCHITECTS 8847 NSW ARCHITECTS 8848 NSW ARCHITECTS 8849 NSW ARCHITECTS 8850 NSW ARCHITECTS 8851 NSW ARCHITECTS 8852 NSW ARCHITECTS 8853 NSW ARCHITECTS 8854 NSW ARCHITECTS 8855 NSW ARCHITECTS 8856 NSW ARCHITECTS 8857 NSW ARCHITECTS 8858 NSW ARCHITECTS 8859 NSW ARCHITECTS 8860 NSW ARCHITECTS 8861 NSW ARCHITECTS 8862 NSW ARCHITECTS 8863 NSW ARCHITECTS 8864 NSW ARCHITECTS 8865 NSW ARCHITECTS 8866 NSW ARCHITECTS 8867 NSW ARCHITECTS 8868 NSW ARCHITECTS 8869 NSW ARCHITECTS 8870 NSW ARCHITECTS 8871 NSW ARCHITECTS 8872 NSW ARCHITECTS 8873 NSW ARCHITECTS 8874 NSW ARCHITECTS 8875 NSW ARCHITECTS 8876 NSW ARCHITECTS 8877 NSW ARCHITECTS 8878 NSW ARCHITECTS 8879 NSW ARCHITECTS 8880 NSW ARCHITECTS 8881 NSW ARCHITECTS 8882 NSW ARCHITECTS 8883 NSW ARCHITECTS 8884 NSW ARCHITECTS 8885 NSW ARCHITECTS 8886 NSW ARCHITECTS 8887 NSW ARCHITECTS 8888 NSW ARCHITECTS 8889 NSW ARCHITECTS 8890 NSW ARCHITECTS 8891 NSW ARCHITECTS 8892 NSW ARCHITECTS 8893 NSW ARCHITECTS 8894 NSW ARCHITECTS 8895 NSW ARCHITECTS 8896 NSW ARCHITECTS 8897 NSW ARCHITECTS 8898 NSW ARCHITECTS 8899 NSW ARCHITECTS 8900 NSW ARCHITECTS 8901 NSW ARCHITECTS 8902 NSW ARCHITECTS 8903 NSW ARCHITECTS 8904 NSW ARCHITECTS 8905 NSW ARCHITECTS 8906 NSW ARCHITECTS 8907 NSW ARCHITECTS 8908 NSW ARCHITECTS 8909 NSW ARCHITECTS 8910 NSW ARCHITECTS 8911 NSW ARCHITECTS 8912 NSW ARCHITECTS 8913 NSW ARCHITECTS 8914 NSW ARCHITECTS 8915 NSW ARCHITECTS 8916 NSW ARCHITECTS 8917 NSW ARCHITECTS 8918 NSW ARCHITECTS 8919 NSW ARCHITECTS 8920 NSW ARCHITECTS 8921 NSW ARCHITECTS 8922 NSW ARCHITECTS 8923 NSW ARCHITECTS 8924 NSW ARCHITECTS 8925 NSW ARCHITECTS 8926 NSW ARCHITECTS 8927 NSW ARCHITECTS 8928 NSW ARCHITECTS 8929 NSW ARCHITECTS 8930 NSW ARCHITECTS 8931 NSW ARCHITECTS 8932 NSW ARCHITECTS 8933 NSW ARCHITECTS 8934 NSW ARCHITECTS 8935 NSW ARCHITECTS 8936 NSW ARCHITECTS 8937 NSW ARCHITECTS 8938 NSW ARCHITECTS 8939 NSW ARCHITECTS 8940 NSW ARCHITECTS 8941 NSW ARCHITECTS 8942 NSW ARCHITECTS 8943 NSW ARCHITECTS 8944 NSW ARCHITECTS 8945 NSW ARCHITECTS 8946 NSW ARCHITECTS 8947 NSW ARCHITECTS 8948 NSW ARCHITECTS 8949 NSW ARCHITECTS 8950 NSW ARCHITECTS 8951 NSW ARCHITECTS 8952 NSW ARCHITECTS 8953 NSW ARCHITECTS 8954 NSW ARCHITECTS 8955 NSW ARCHITECTS 8956 NSW ARCHITECTS 8957 NSW ARCHITECTS 8958 NSW ARCHITECTS 8959 NSW ARCHITECTS 8960 NSW ARCHITECTS 8961 NSW ARCHITECTS 8962 NSW ARCHITECTS 8963 NSW ARCHITECTS 8964 NSW ARCHITECTS 8965 NSW ARCHITECTS 8966 NSW ARCHITECTS 8967 NSW ARCHITECTS 8968 NSW ARCHITECTS 8969 NSW ARCHITECTS 8970 NSW ARCHITECTS 8971 NSW ARCHITECTS 8972 NSW ARCHITECTS 8973 NSW ARCHITECTS 8974 NSW ARCHITECTS 8975 NSW ARCHITECTS 8976 NSW ARCHITECTS 8977 NSW ARCHITECTS 8978 NSW ARCHITECTS 8979 NSW ARCHITECTS 8980 NSW ARCHITECTS 8981 NSW ARCHITECTS 8982 NSW ARCHITECTS 8983 NSW ARCHITECTS 8984 NSW ARCHITECTS 8985 NSW ARCHITECTS 8986 NSW ARCHITECTS 8987 NSW ARCHITECTS 8988 NSW ARCHITECTS 8989 NSW ARCHITECTS 8990 NSW ARCHITECTS 8991 NSW ARCHITECTS 8992 NSW ARCHITECTS 8993 NSW ARCHITECTS 8994 NSW ARCHITECTS 8995 NSW ARCHITECTS 8996 NSW ARCHITECTS 8997 NSW ARCHITECTS 8998 NSW ARCHITECTS 8999 NSW ARCHITECTS 9000		DRAWING NUMBER A0013		DRAWING SCALE AS SHOWN	
NOTES 1. THIS DOCUMENT IS THE PROPERTY OF KOICHI TAKADA ARCHITECTS. IT IS TO BE USED ONLY FOR THE PROJECT AND SITE SPECIFICALLY IDENTIFIED IN THE TITLE BLOCK. IT IS NOT TO BE REPRODUCED, COPIED, OR TRANSMITTED IN ANY FORM OR BY ANY MEANS, WITHOUT THE WRITTEN PERMISSION OF KOICHI TAKADA ARCHITECTS. THE CLIENT ACCEPTS THAT THE ARCHITECTS ARE NOT RESPONSIBLE FOR THE ACCURACY OF THE INFORMATION PROVIDED IN THIS DOCUMENT AND THAT THE CLIENT IS RESPONSIBLE FOR OBTAINING ALL NECESSARY INFORMATION FROM THE RELEVANT AUTHORITIES. THE ARCHITECTS ACCEPT NO LIABILITY FOR ANY LOSS OR DAMAGE, INCLUDING CONSEQUENTIAL DAMAGES, ARISING FROM THE USE OF THIS DOCUMENT. THE ARCHITECTS ACCEPT NO LIABILITY FOR ANY LOSS OR DAMAGE, INCLUDING CONSEQUENTIAL DAMAGES, ARISING FROM THE USE OF THIS DOCUMENT. THE ARCHITECTS ACCEPT NO LIABILITY FOR ANY LOSS OR DAMAGE, INCLUDING CONSEQUENTIAL DAMAGES, ARISING FROM THE USE OF THIS DOCUMENT.		COORDINATOR 		DATE 04/08/24			



NO. 115B (2000) 115B VICTORIA ST. 2 STOREY	NO. 117 (2000) 117 VICTORIA ST. 2 STOREY	NO. 119-121 (2000) 119-121 VICTORIA ST. 3 STOREY	NO. 30A-34 (2000) 30A-34 BROUGHAM ST. FUTURE DEVELOPMENT																								
DATE: 28/01/2011 SCALE: 1:100@A1, 1:200@A3	DATE: 28/01/2011 SCALE: 1:100@A1, 1:200@A3	DATE: 28/01/2011 SCALE: 1:100@A1, 1:200@A3	DATE: 28/01/2011 SCALE: 1:100@A1, 1:200@A3																								
PROJECT: 117 VICTORIA ST DEVELOPMENT APPLICATION		PROJECT: 117 VICTORIA ST DEVELOPMENT APPLICATION																									
DRAWN BY: A0100		DRAWN BY: A0100																									
CHECKED BY: 3		CHECKED BY: 3																									
DATE: 04/06/24		DATE: 04/06/24																									
<p>THE DOCUMENT IS NOT VALID UNLESS APPROVED FOR CONSTRUCTION BY THE LOCAL COUNCIL. THE DOCUMENT IS NOT VALID UNLESS APPROVED FOR CONSTRUCTION BY THE LOCAL COUNCIL.</p>		<p>THE DOCUMENT IS NOT VALID UNLESS APPROVED FOR CONSTRUCTION BY THE LOCAL COUNCIL. THE DOCUMENT IS NOT VALID UNLESS APPROVED FOR CONSTRUCTION BY THE LOCAL COUNCIL.</p>																									
<p>ARCHITECT: BETE J & CO. LEVEL 4 61 MARLBOROUGH ST SYDNEY NSW 2010 TEL: 8988 8533 WWW.BETE.COM.AU</p>		<p>ARCHITECT: Koichi Takada Architects 110/115 VICTORIA ST SYDNEY NSW 2011 TEL: 8988 8533 WWW.KOICHI-TAKADA.COM</p>																									
<p>CLIENT: CERCOSE 117 VICTORIA ST NSW 2010</p>		<p>CLIENT: CERCOSE 117 VICTORIA ST NSW 2010</p>																									
<p>NOTES: 1. THIS DOCUMENT IS VALID UNLESS APPROVED FOR CONSTRUCTION BY THE LOCAL COUNCIL. 2. THIS DOCUMENT IS NOT VALID UNLESS APPROVED FOR CONSTRUCTION BY THE LOCAL COUNCIL. 3. THIS DOCUMENT IS NOT VALID UNLESS APPROVED FOR CONSTRUCTION BY THE LOCAL COUNCIL.</p>		<p>NOTES: 1. THIS DOCUMENT IS VALID UNLESS APPROVED FOR CONSTRUCTION BY THE LOCAL COUNCIL. 2. THIS DOCUMENT IS NOT VALID UNLESS APPROVED FOR CONSTRUCTION BY THE LOCAL COUNCIL. 3. THIS DOCUMENT IS NOT VALID UNLESS APPROVED FOR CONSTRUCTION BY THE LOCAL COUNCIL.</p>																									
<p>REVISIONS:</p> <table border="1"> <thead> <tr> <th>NO.</th> <th>DATE</th> <th>DESCRIPTION</th> </tr> </thead> <tbody> <tr> <td>1</td> <td>28/01/2011</td> <td>ISSUED FOR PERMIT</td> </tr> <tr> <td>2</td> <td>28/01/2011</td> <td>ISSUED FOR PERMIT</td> </tr> <tr> <td>3</td> <td>28/01/2011</td> <td>ISSUED FOR PERMIT</td> </tr> </tbody> </table>		NO.	DATE	DESCRIPTION	1	28/01/2011	ISSUED FOR PERMIT	2	28/01/2011	ISSUED FOR PERMIT	3	28/01/2011	ISSUED FOR PERMIT	<p>REVISIONS:</p> <table border="1"> <thead> <tr> <th>NO.</th> <th>DATE</th> <th>DESCRIPTION</th> </tr> </thead> <tbody> <tr> <td>1</td> <td>28/01/2011</td> <td>ISSUED FOR PERMIT</td> </tr> <tr> <td>2</td> <td>28/01/2011</td> <td>ISSUED FOR PERMIT</td> </tr> <tr> <td>3</td> <td>28/01/2011</td> <td>ISSUED FOR PERMIT</td> </tr> </tbody> </table>		NO.	DATE	DESCRIPTION	1	28/01/2011	ISSUED FOR PERMIT	2	28/01/2011	ISSUED FOR PERMIT	3	28/01/2011	ISSUED FOR PERMIT
NO.	DATE	DESCRIPTION																									
1	28/01/2011	ISSUED FOR PERMIT																									
2	28/01/2011	ISSUED FOR PERMIT																									
3	28/01/2011	ISSUED FOR PERMIT																									
NO.	DATE	DESCRIPTION																									
1	28/01/2011	ISSUED FOR PERMIT																									
2	28/01/2011	ISSUED FOR PERMIT																									
3	28/01/2011	ISSUED FOR PERMIT																									



NO. 1. REVISION 2. REVISION 3. REVISION 4. REVISION	NO. DATE 1. 01/01/2011 2. 01/01/2011 3. 01/01/2011 4. 01/01/2011	REVISION NOTES 1. 01/01/2011 2. 01/01/2011 3. 01/01/2011 4. 01/01/2011	SITE PLAN 117 VICTORIA ST POTS POINT, NSW 2011	ARCHITECT Koichi Takada Architects SUITE 4 & 5, LEVEL 4 61 MARLBOROUGH ST SYDNEY NSW 2011 TEL: 02 9592 8533 WWW.KOICHI-TAKADA.COM	CLIENT CERROSE Parramatta Road, LEICHHARDT NSW 2040	NOTES 1. THIS DOCUMENT IS NOT VALID FOR CONSTRUCTION UNLESS IT IS ACCOMPANIED BY THE RELEVANT LOCAL GOVERNMENT APPROVED DEVELOPMENT APPLICATION AND ALL NECESSARY LOCAL GOVERNMENT APPROVALS. 2. THE INFORMATION CONTAINED HEREIN IS FOR INFORMATION ONLY AND DOES NOT CONSTITUTE A CONTRACT. 3. THE INFORMATION CONTAINED HEREIN IS SUBJECT TO THE TERMS AND CONDITIONS OF THE ARCHITECT'S STANDARD CONDITIONS OF CONTRACT. 4. THE INFORMATION CONTAINED HEREIN IS SUBJECT TO THE TERMS AND CONDITIONS OF THE ARCHITECT'S STANDARD CONDITIONS OF CONTRACT.	PROJECT TITLE LEVEL 01 FLOOR PLAN	DRAWING NO. A0101	REVISION NO. 4	DATE 04/05/24	SCALE 1:100@A1, 1:200@A3
--	--	--	--	---	--	---	--------------------------------------	----------------------	-------------------	------------------	-----------------------------



1158 VICTORIA ST.
2 STOREY

101-115 VICTORIA ST.
5 & 15 STOREY
(TOP OF ROCK)

119-121 VICTORIA ST.
3 STOREY

30A-34 BROUGHAM ST
FUTURE DEVELOPMENT

NSL NUMBER: 1. PROJECT NUMBER 2. SHEET NUMBER 3. DRAWING TITLE	DATE: 01/08/2011 02/08/2011 03/08/2011	REVISION NOTES: A. 1.000 B. 1.000 C. 1.000 D. 1.000	DRAWING TITLE: LEVEL 03 FLOOR PLAN	PROJECT: 117 VICTORIA ST POTTS POINT, NSW 2011	SHEET: A0103 OF 4	DATE: 04/05/24
ARCHITECT: SITES 4 & 5, LEVEL 4 61 MARLBOROUGH ST SYDNEY NSW 2011 TEL: 9992 8533 WWW.SITES4.COM.AU ARCHITECTS: ANIMATED ARCHITECTS NSW ARCHITECTS 8801 VIC ARCHITECTS 1979 QLD ARCHITECTS 1979 WA ARCHITECTS 1979 KOICHI-TAKADA.COM			ARCHITECT: Koichi Takada Architects			THIS DOCUMENT IS NOT VALID E.O APPROVED FOR CONSTRUCTION CONTRACTOR'S OBLIGATION FOR THE PROJECT IS NOT VALID E.O APPROVED FOR CONSTRUCTION
CLIENT: CEREOSE Parramatta Road, LEICHHARDT NSW 2040			ARCHITECT: Koichi Takada Architects			
NOTES: 1. THIS DOCUMENT IS NOT VALID FOR CONSTRUCTION UNLESS IT IS APPROVED FOR CONSTRUCTION BY THE LOCAL COUNCIL. 2. THE DRAWING IS THE PROPERTY OF THE ARCHITECT AND IS NOT TO BE REPRODUCED OR TRANSMITTED IN ANY FORM OR BY ANY MEANS, ELECTRONIC OR MECHANICAL, INCLUDING PHOTOCOPYING, RECORDING, OR BY ANY INFORMATION STORAGE AND RETRIEVAL SYSTEM, WITHOUT THE WRITTEN PERMISSION OF THE ARCHITECT. 3. THE ARCHITECT'S LIABILITY IS LIMITED TO THE DESIGN AND CONSTRUCTION OF THIS DOCUMENT AND IS NOT VALID FOR CONSTRUCTION UNLESS IT IS APPROVED FOR CONSTRUCTION BY THE LOCAL COUNCIL. 4. THE ARCHITECT'S LIABILITY IS LIMITED TO THE DESIGN AND CONSTRUCTION OF THIS DOCUMENT AND IS NOT VALID FOR CONSTRUCTION UNLESS IT IS APPROVED FOR CONSTRUCTION BY THE LOCAL COUNCIL. 5. THE ARCHITECT'S LIABILITY IS LIMITED TO THE DESIGN AND CONSTRUCTION OF THIS DOCUMENT AND IS NOT VALID FOR CONSTRUCTION UNLESS IT IS APPROVED FOR CONSTRUCTION BY THE LOCAL COUNCIL.			ARCHITECT: Koichi Takada Architects			